

# Installing Tire Planters

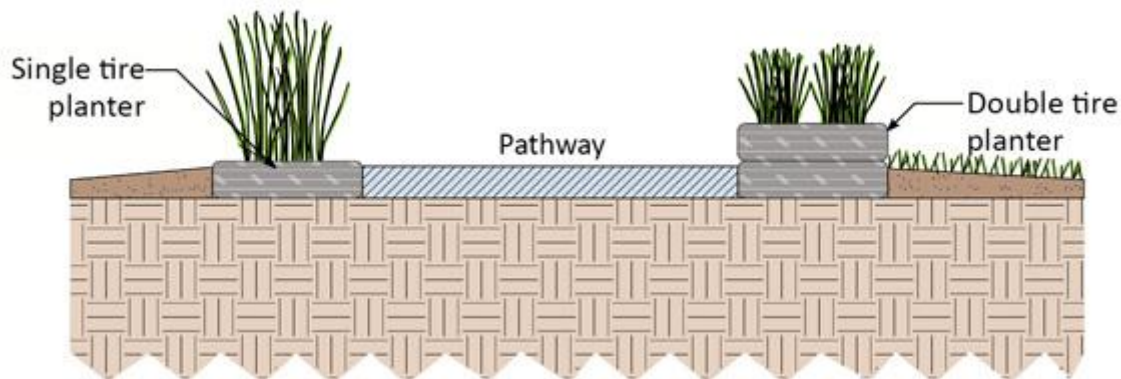
## How can I install tire planters in the outdoor learning environment?

Tire planters are universally available and inexpensive, and are a great addition to any low-cost outdoor learning environment naturalization.

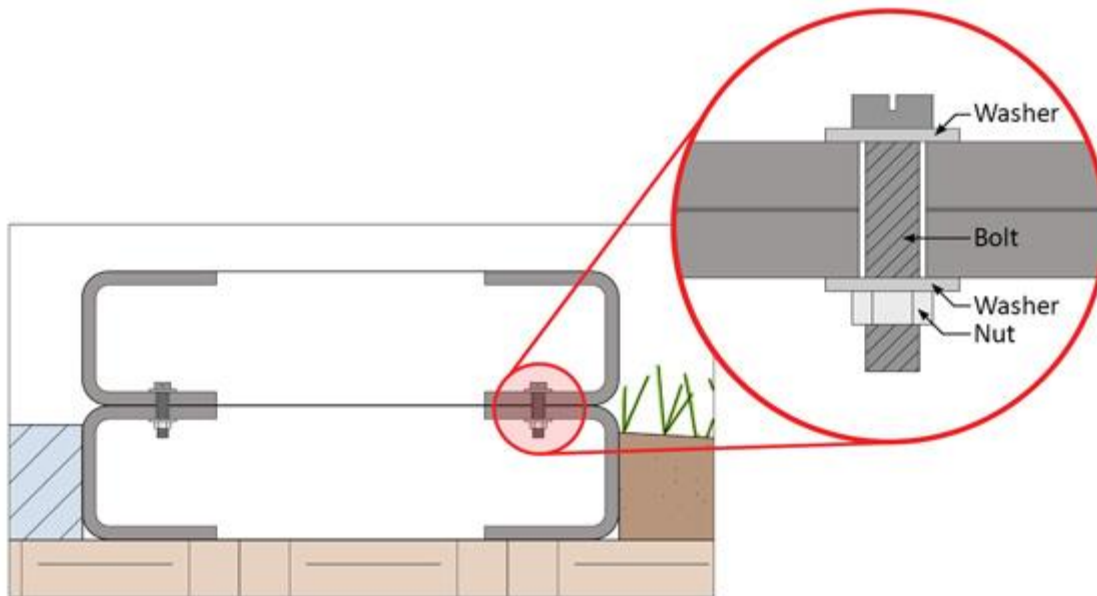
*Old tires + soil + plants = instant planting bed, path buffer, or border planting*

Tires can be found inexpensively at almost any local car repair shop or tire store. If you stack more than one tire, fasten them together so they don't slide apart, using bolts to connect the adjoining tire walls.

Don't plant edibles in tires because as the tires degrade the plants may absorb some of the chemicals from the rubber.



**Figure 1.** Single and double tire planters used to edge a pathway.



**Figure 2.** Before filling a double tire planter with soil, be sure to secure the tires together. Drill holes through the side walls of the tires and use a bolt, two washers and a nut to secure them together.

For information about painting tire planters, check out this [Green Desk post](#).

[Click here to download a pdf with this and more great ideas for affordable settings and elements to improve outdoor play environments.](#)