

Natural Learning Initiative NEWSLETTER

October 2022

NC STATE



Creating environments for healthy human development
and a healthy biosphere for generations to come.

Check out the NLI Website!



Register today for the upcoming POEMS and COLEQT online courses!

Registration is currently open for the Preschool Outdoor Environment Measurement Scale (POEMS) and Childcare Outdoor Learning Environments Quality Tool (COLEQT) courses. Each online self-paced course is worth 0.2 CEUs... [learn more](#)



NLI at the NEAFCS Annual Session

Mid-September, enthusiastic cooperative extension professionals interested in early childhood gardening and healthy eating toured the gardens and play and learning settings at A Safe Place Child Enrichment Center.... [read more](#)

Dr. Adlakha, panelist at Restorative Cities + Urban Mental Health Roundtable

NLI Director, Dr. Deepti Adlakha, was a panelist at the University of Virginia, School of Architecture's Restorative Cities + Urban Mental Health Roundtable held on Sept. 9th... [read more](#)

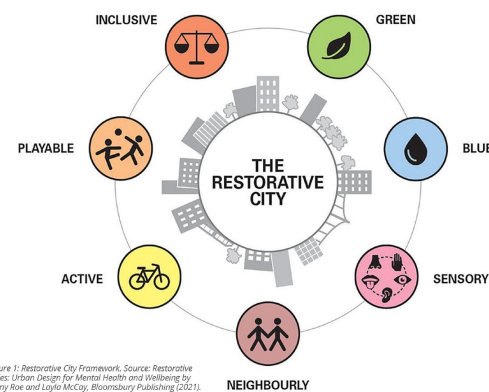


Figure 1: Restorative City Framework. Source: Restorative Cities: Urban Design for Mental Health and Wellbeing by Jenny Roe and Lyell McCay, Bloomsbury Publishing (2021).



Using Pumpkins to Support Learning

Pumpkins fascinate even infants as large, round, orange objects appear in Autumn, ready to be creatively carved into jack o' lanterns. BUT... even more intriguing is watching pumpkins grow... [read more](#)

Thank you for continuing to support our mission!

[CLICK TO DONATE](#) to NLI's Development Fund.

<https://naturalearning.org>
naturalearning@ncsu.edu
(919) 515-8345



If you want to unsubscribe, [click here](#).