

Creating environments for healthy human development
and a healthy biosphere for generations to come.

Check out the NLI Website!



Passing the NLI Baton > Robin Moore to Deepti Adlakha

After 21 exciting years building the Natural Learning Initiative into a successfully “evolving enterprise” with Dr. Nilda Cosco, NLI Director of Programs, Prof. Robin Moore passed on the leadership baton to Dr. Deepti Adlakha, the new NLI Director and Associate Professor of Landscape Architecture and Environmental Planning. [read more...](#)



Register Today! COLEQT Online Short Course, Oct. 11-20

The Childcare Outdoor Learning Environments Quality Tool (COLEQT) course shows how this tool can be used to guide improvements to outdoor children’s environments & promote child development & learning.

Ongoing Research (AHEAD)

The Active and Healthy Environments for Adolescents (AHEAD) study is exploring the relationship between the neighborhood environment and youth physical activity in urban India. Findings from the AHEAD study will guide urban design policy to improve the lives, health and development of children and youth in India. [read more...](#)

Active and Healthy Environments for Adolescents in India (AHEAD)



DEEPTI ADLAKHA, Ph.D.
Associate Professor
Director, Natural Learning Initiative
Department of Landscape
Architecture & Urban Planning
NC State University, North Carolina, USA

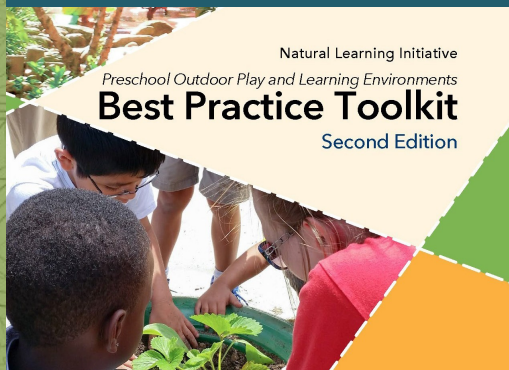
To help India's children lead more active, healthy lifestyles, the AHEAD study will examine a range of influences on physical activity, including policies, environments, families, and individual factors.



MEGHA TYAGI, Ph.D.
Independent Research Consultant
Child Friendly Urban Environments
India



JAMES P. SALLIS, Ph.D.
Distinguished Professor Emeritus
Herbert Wertheim School of Public
Health and Human Longevity Science
University of California, San Diego, USA
Professional Fellow
Australian Catholic University, Melbourne, Australia



Preschool Outdoor Play and Learning Environments: Best Practice Toolkit 2nd ed.

The toolkit is a guide for implementing POD (Preventing Obesity by Design) which focuses on modifying the built environment to support physical activity, healthy eating, outdoor learning, social-emotional development, and mental health.

Necessity of Urban Green Space

“Green spaces can significantly benefit children’s physical, mental and social development – from infancy into adulthood,” according to UNICEF’s recently released discussion paper prioritizing childcare centers and schools. [read more...](#)



DISCUSSION PAPER:
The Necessity of Urban Green Space for Children’s Optimal Development

CLICK TO DONATE to NLI’s Development Fund.

<https://naturalearning.org>
naturalearning@ncsu.edu
(919) 515-8345



If you want to unsubscribe, click here.